

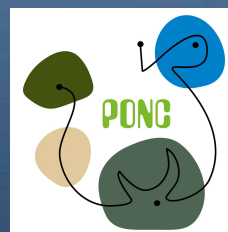
juni '23

Rewilding the river Scheldt – Sigma

Lieven Nachtergale – Agency Nature & Forest

 **sigmaplan**

Ruimte voor rivier en natuur



Co-funded by the
Erasmus+ Programme
of the European Union

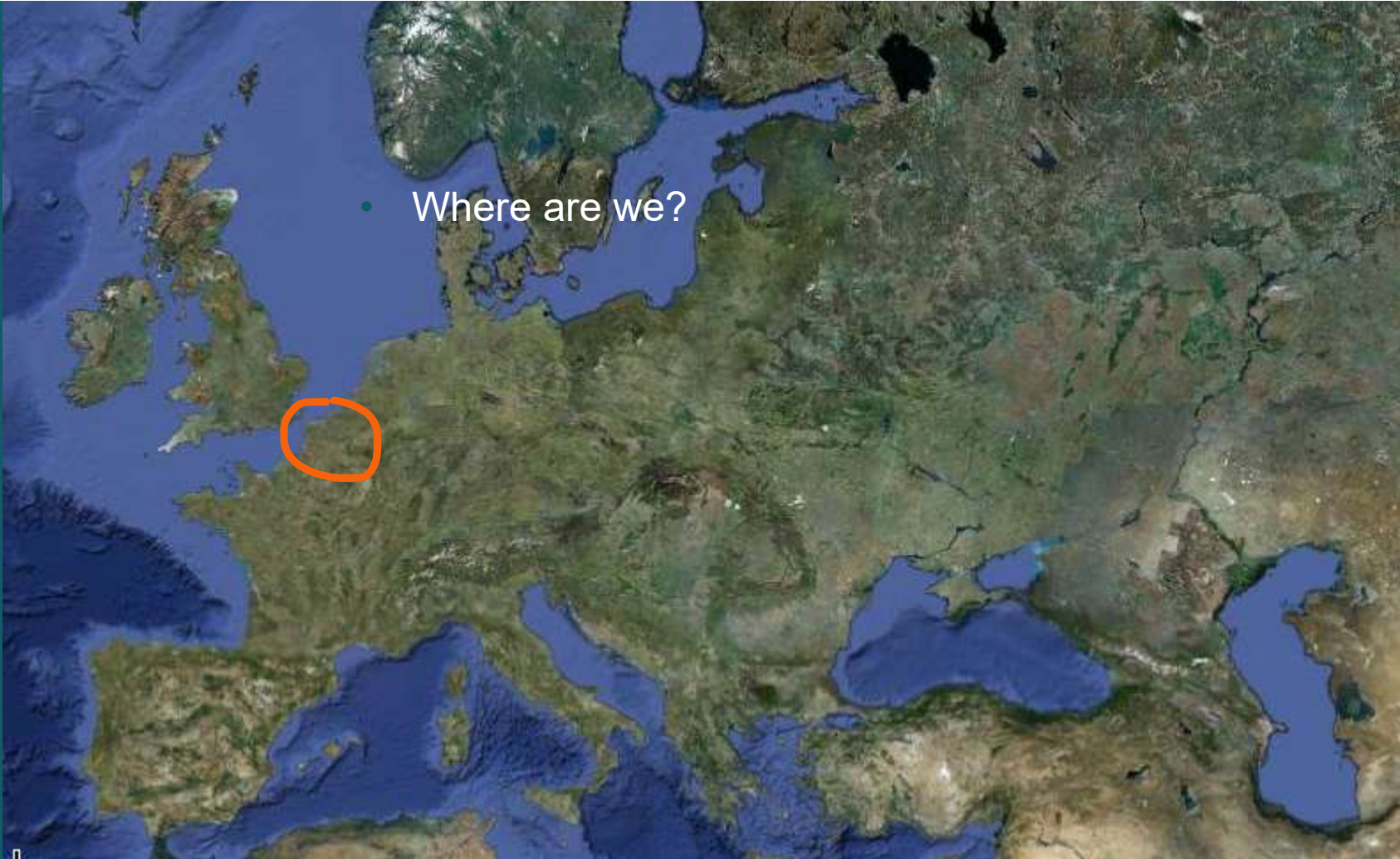


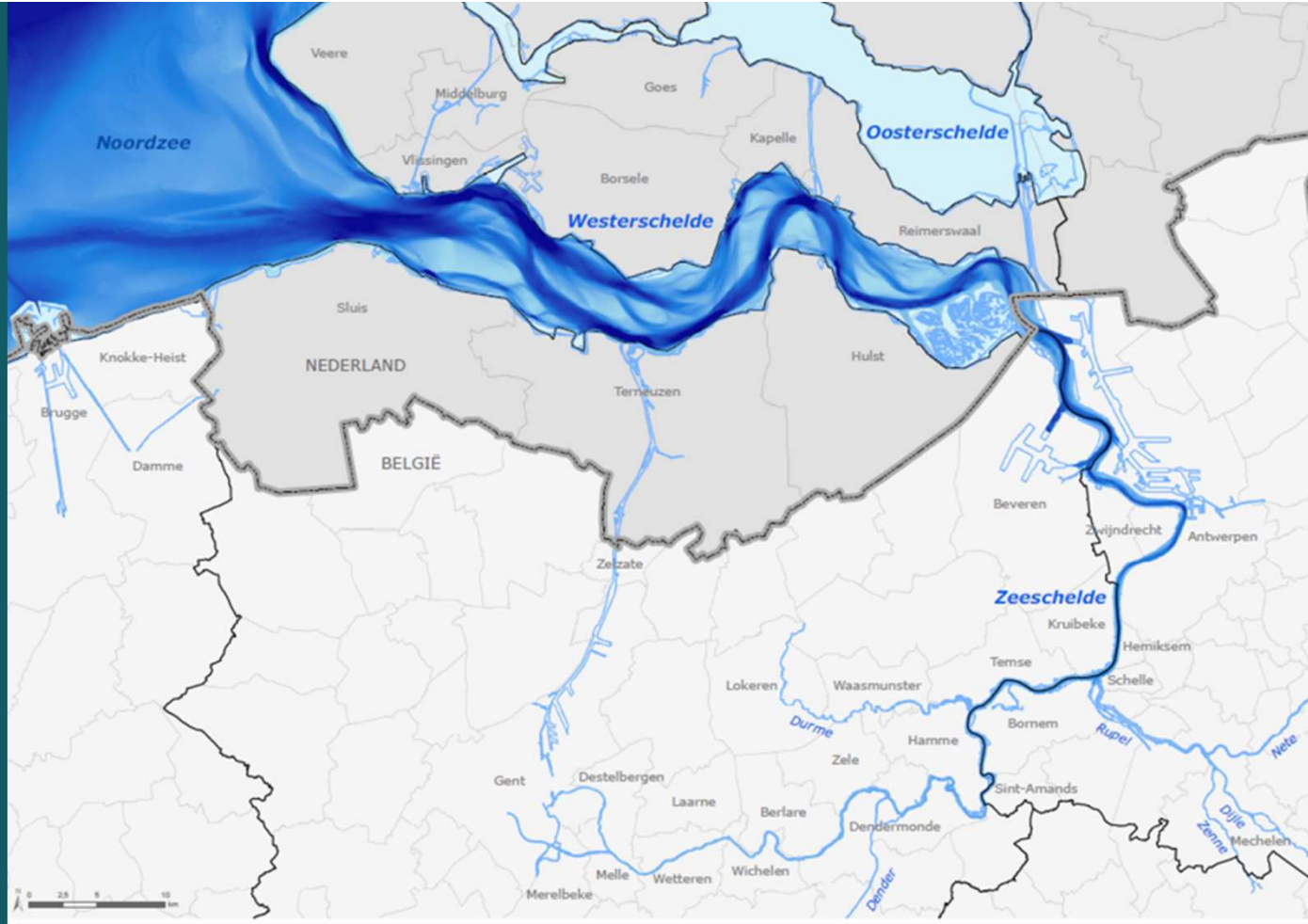
Rewilding the river Scheldt

- 1.0 short meet and greet
- 2.0 ecological problems
- 3.0 social demands
- 4.0 Sigmoplan
- 5.0 techniques - nature based solutions



- Where are we?







- tidal river
- gradient salt – brackish – fresh water
- habitats: mud flats, wetlands (grasslands, marshes, alluvial forests), rivers and creeks

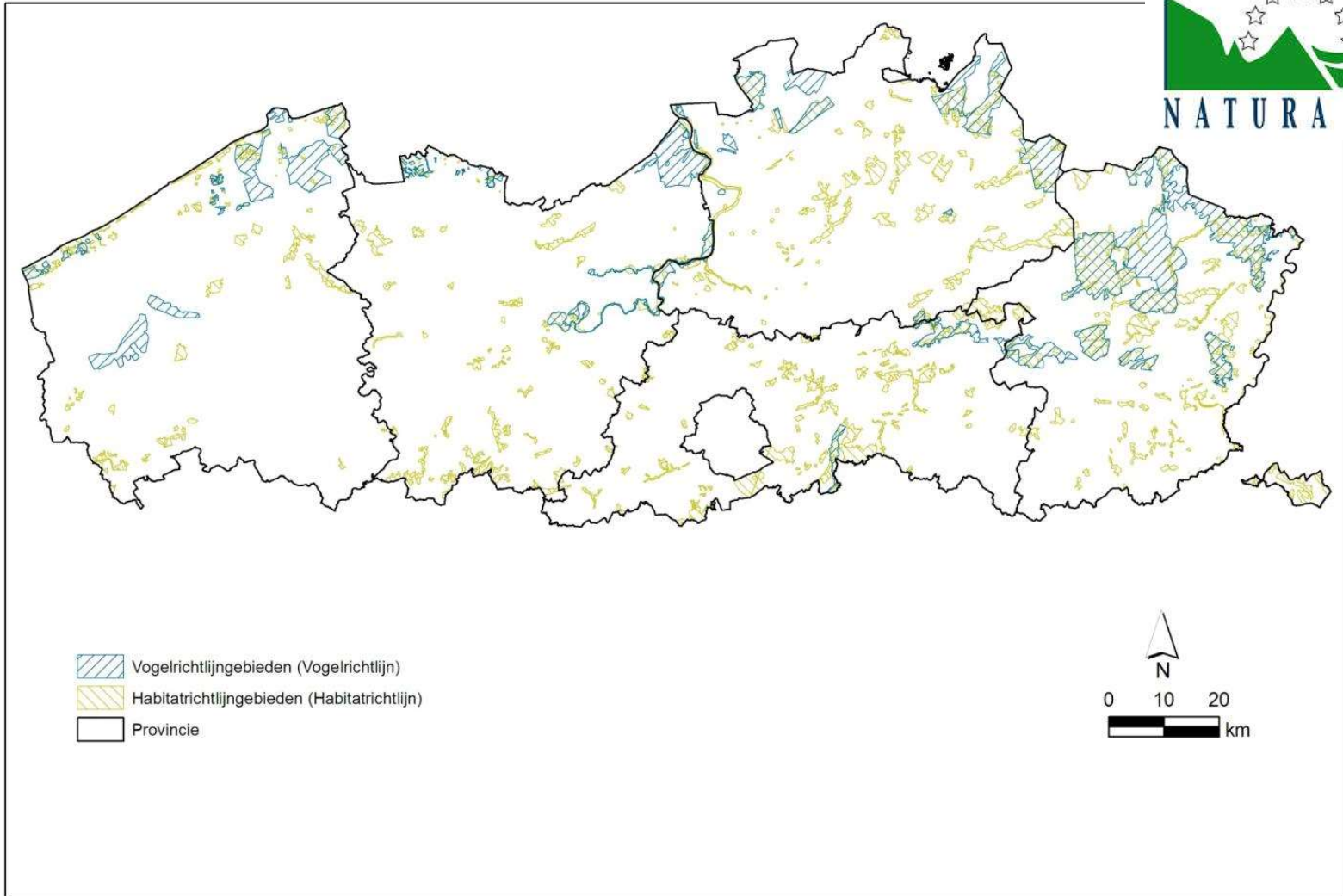





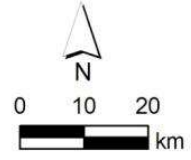








-  Vogelrichtlijngebieden (Vogelrichtlijn)
-  Habitatrictlijngebieden (Habitatrichtlijn)
-  Provincie



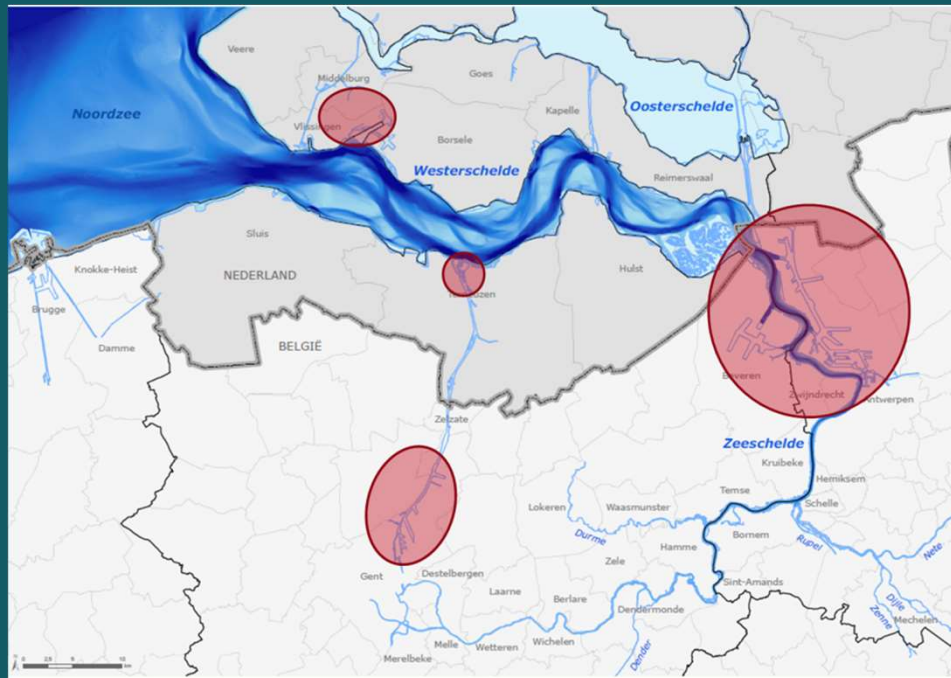
ecological problems

- physical
 - high/low extremities in water coming from upstream
 - increasingly rapid floods, rising of tidal amplitude, assymmetric tides
 - temperature rising
 - turbidity rising

ecological problems

- chemical
 - changes in salinity
 - poor water quality (O₂, N, P, Si)
 - toxic substances
 - poor quality and quantity of sedimentation zones
- habitats
 - loss of habitats, no connectivity, degradation of habitats
- fauna and flora
 - few viable populations of typical species
 - invasive exotic species

ecological problems – social demands & climate change



- port development - deepening of the fairway
- embankments
- urbanisation
- intensification of agriculture
- tourism / recreation
- safety
- > **insufficient resilience of the river system (2004)**

integrated solutions > Sigmoplan (2005)



flood protection

deepening en widening of the
shipping lane to the Port of Antwerp

restoration ecosystem functioning

+ a good state according Natura 2000

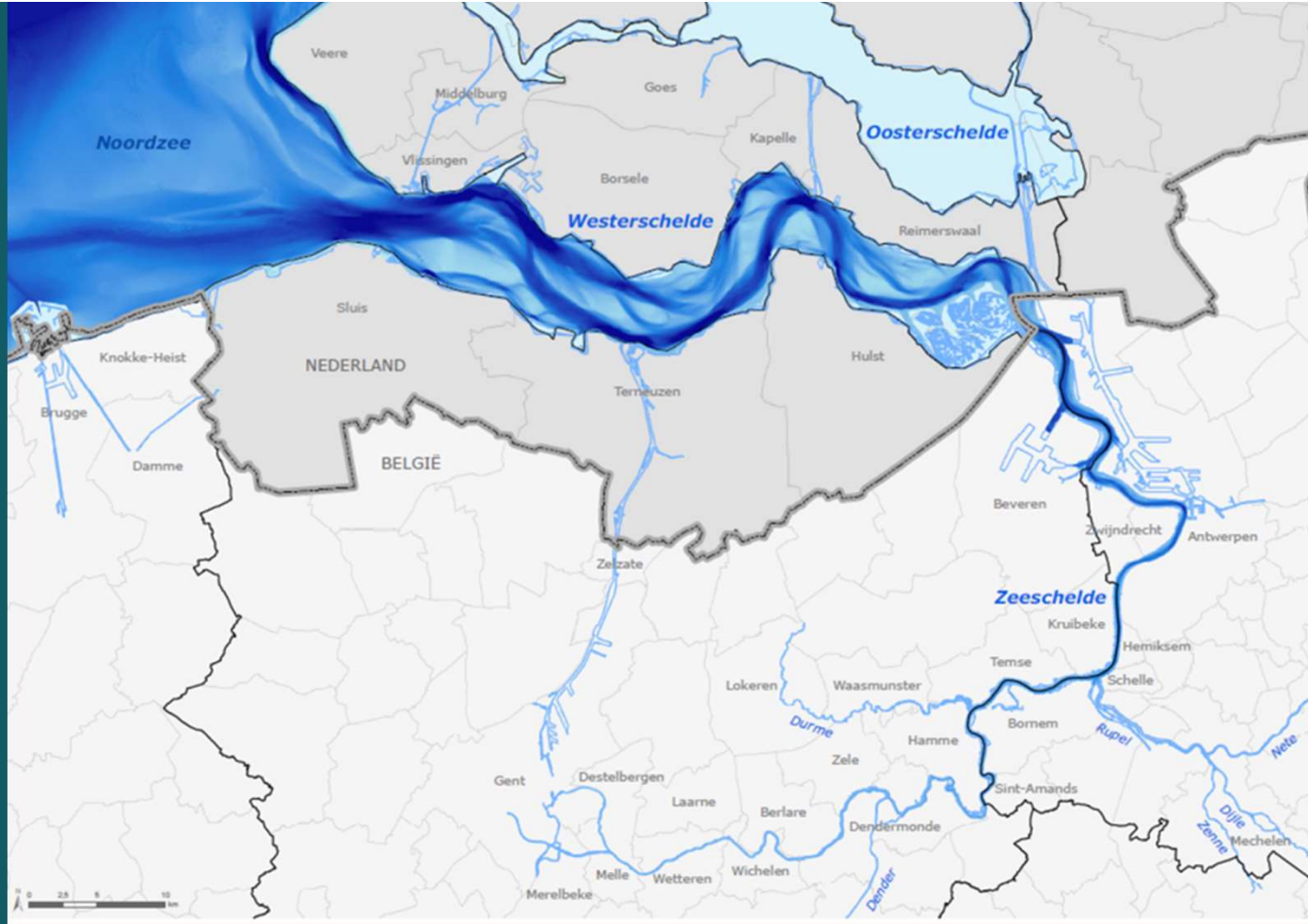
Water Framework Directive

Long Term vision of the Schelde estuary

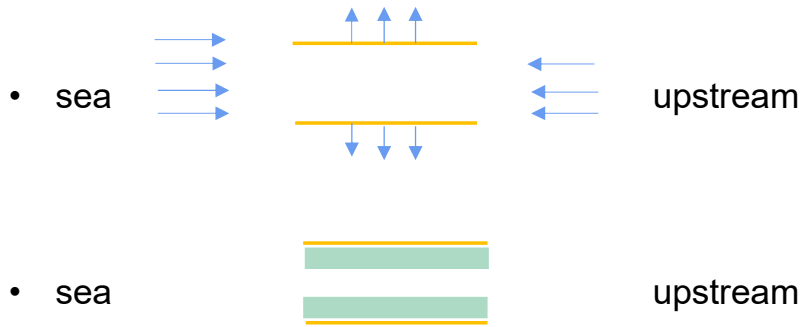


- Where are we?

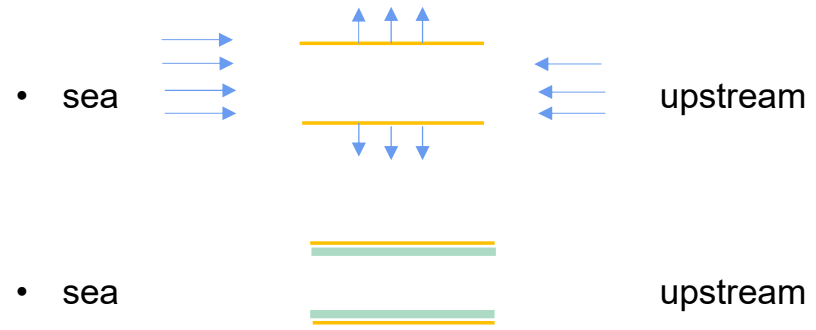




Het Sigmaplan



Het Sigmaplan



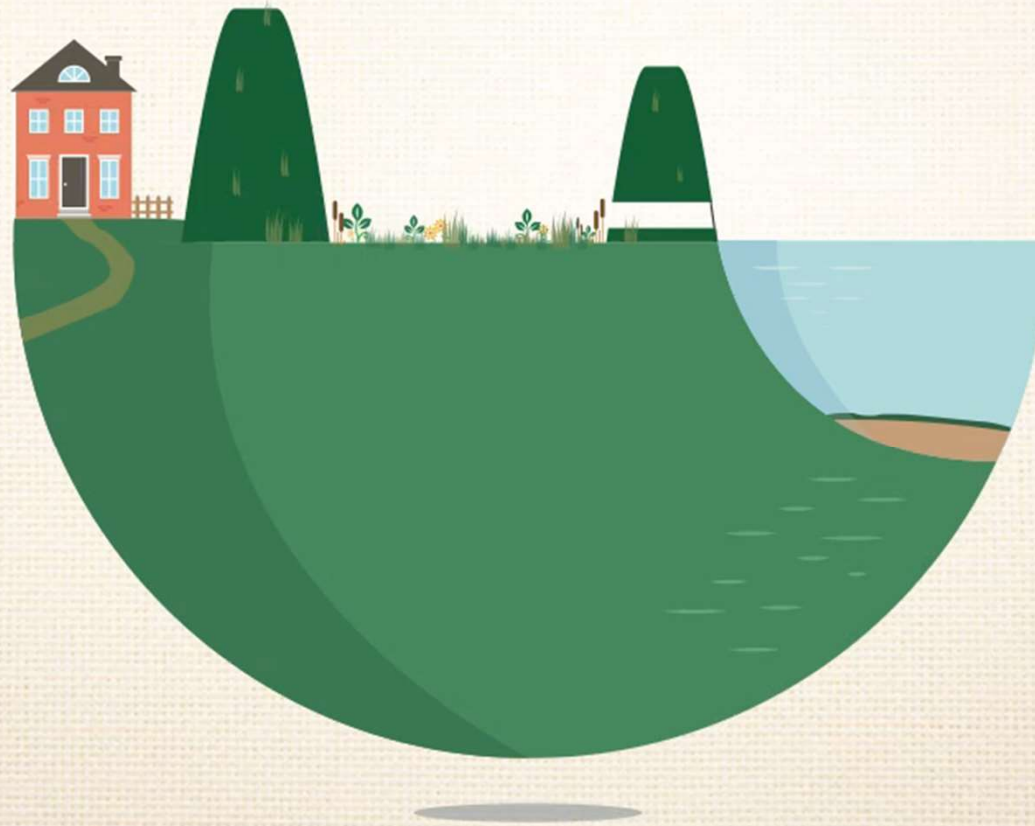
Solutions > Sigmoplan

- **restoration of resilience and ecosystem functioning = rewilding the river**
 - + 500 ha mudflats (mud) > food water birds and fish, counteracting tidal energy rise, water purification, extra habitats, oxigenation
 - + 1,500 ha mudflats (vegetated) > Si, habitat, water purification, anti tidal energy, extra habitas, oxigenation
 - + 900 ha marshland > extra habitats, water retention, water purification
 - + 1,200 ha wetlands > extra habitats, water retention, water purification
 - + restoration of **meanders**
 - + restoration of **connectivity**
 - + restoration of **fish migration**
 - + restoration **viable population of target species**

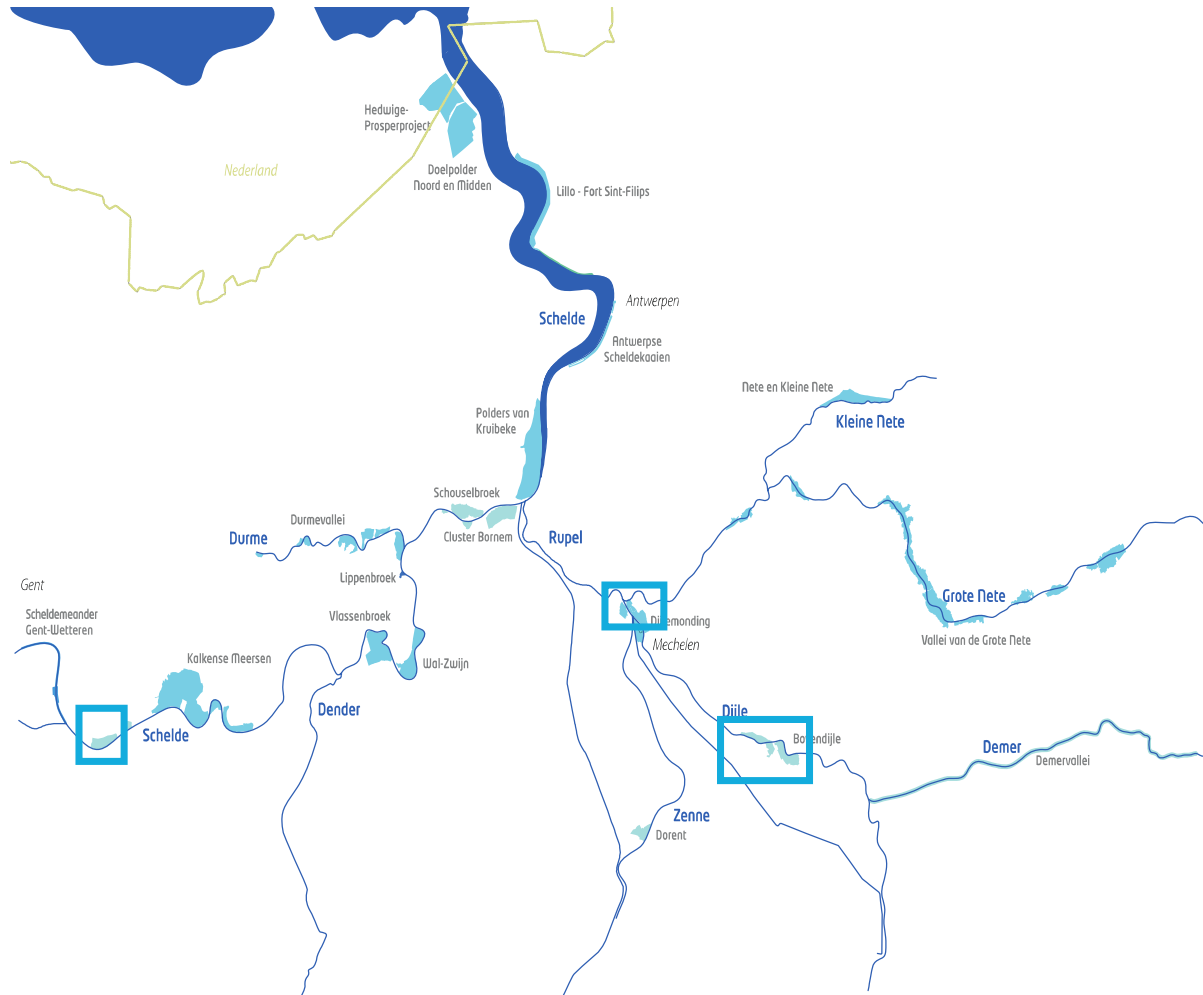
Solutions > techniques

- **Combining nature restoration techniques and flood control measures**
 - 'depoldering' = giving land back to the river
 - 'controlled inundation zones with reduced tide'
 - restoration of meanders
 - sluices that allow passage of fish
 - ...
 - **central philosophy: nature based solution**

controlled inundation zone



CIZ's purely safety



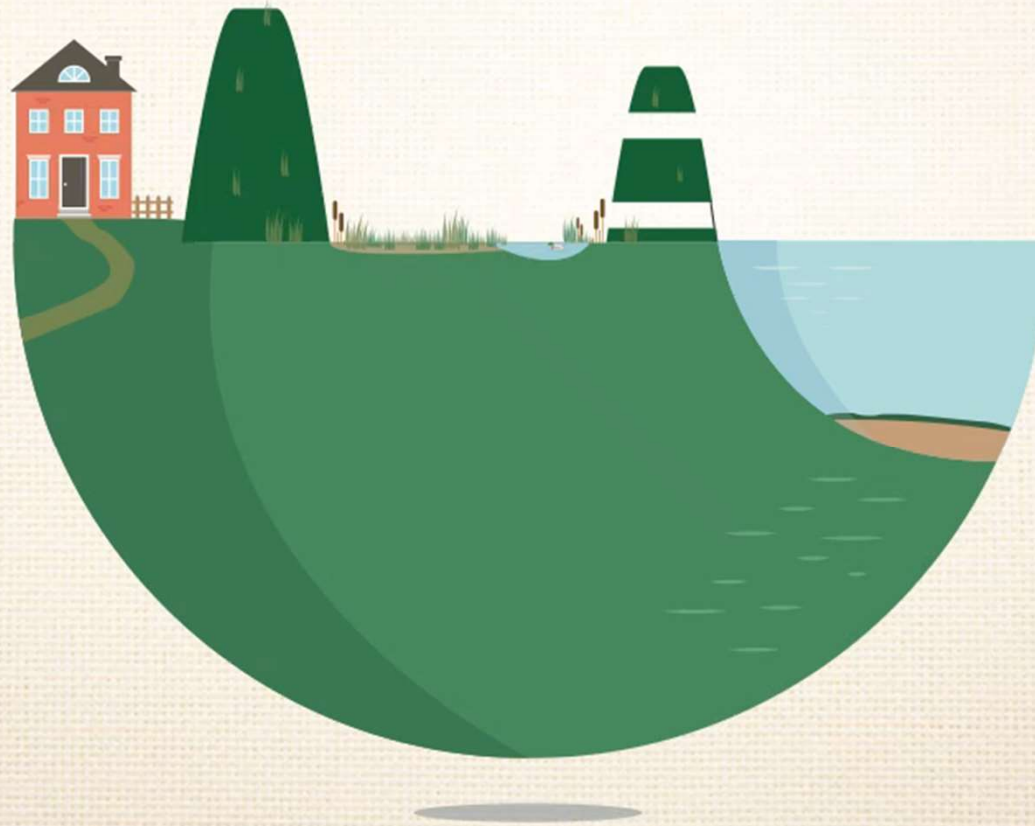
CIZ's -wetlands





CIZ's Polders van Kruibeke

CIZ-RT: how does it work?



Before construction



soresma 2009



Agentschap voor
Natuur en Bos



Low tide



soresma 2009



Agentschap voor
Natuur en Bos



High tide



soresma 2009



Agentschap voor
Natuur en Bos



Spring tide



soresma 2009



Agentschap voor
Natuur en Bos



Storm tide (1 -2 /year)



soresma 2009



Agentschap voor
Natuur en Bos



Extreme storm tide



soresma 2009



Agentschap voor
Natuur en Bos



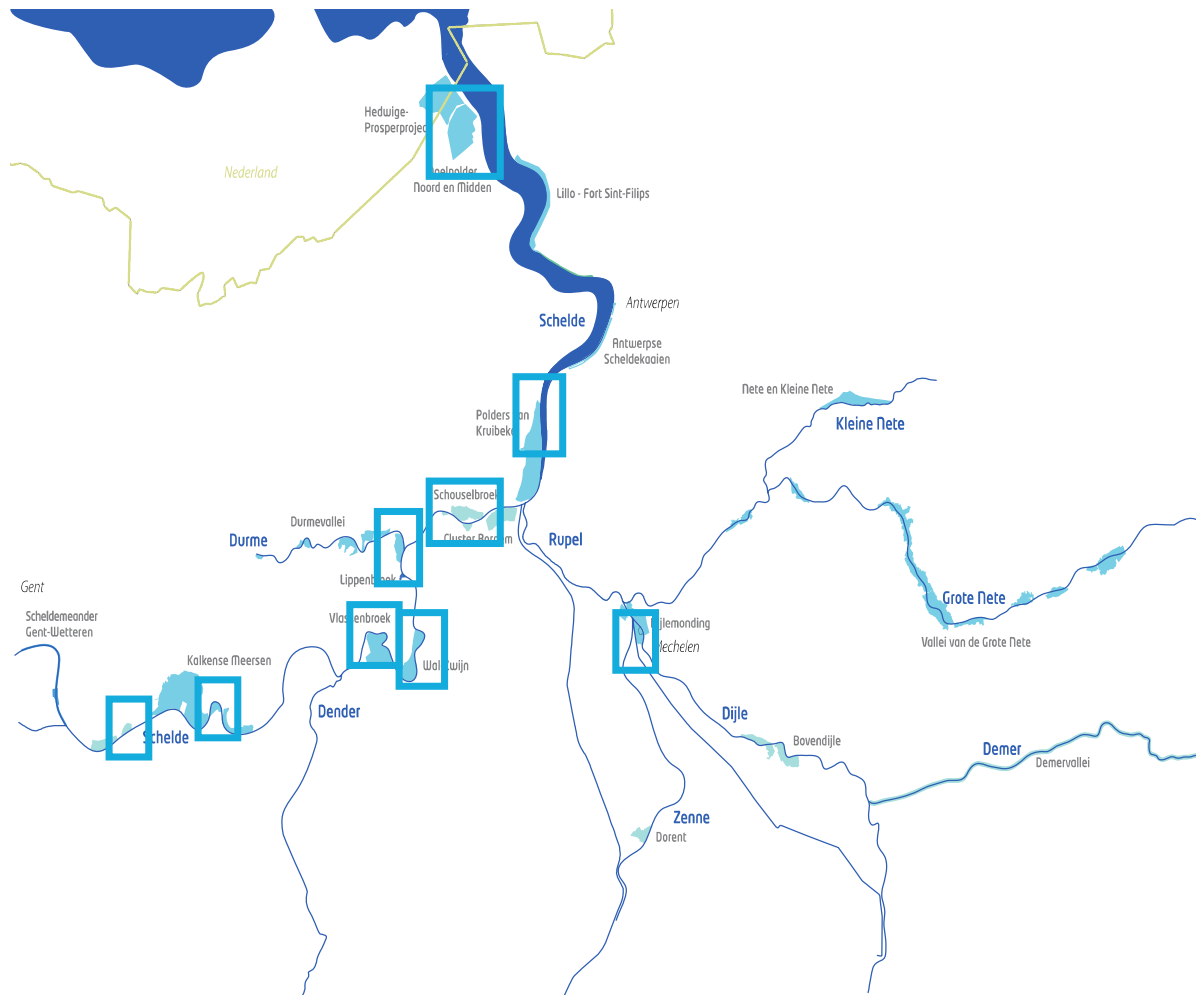


**CIZ-RT Bergenmeersen
(Cluster Kalkense Meersen)**

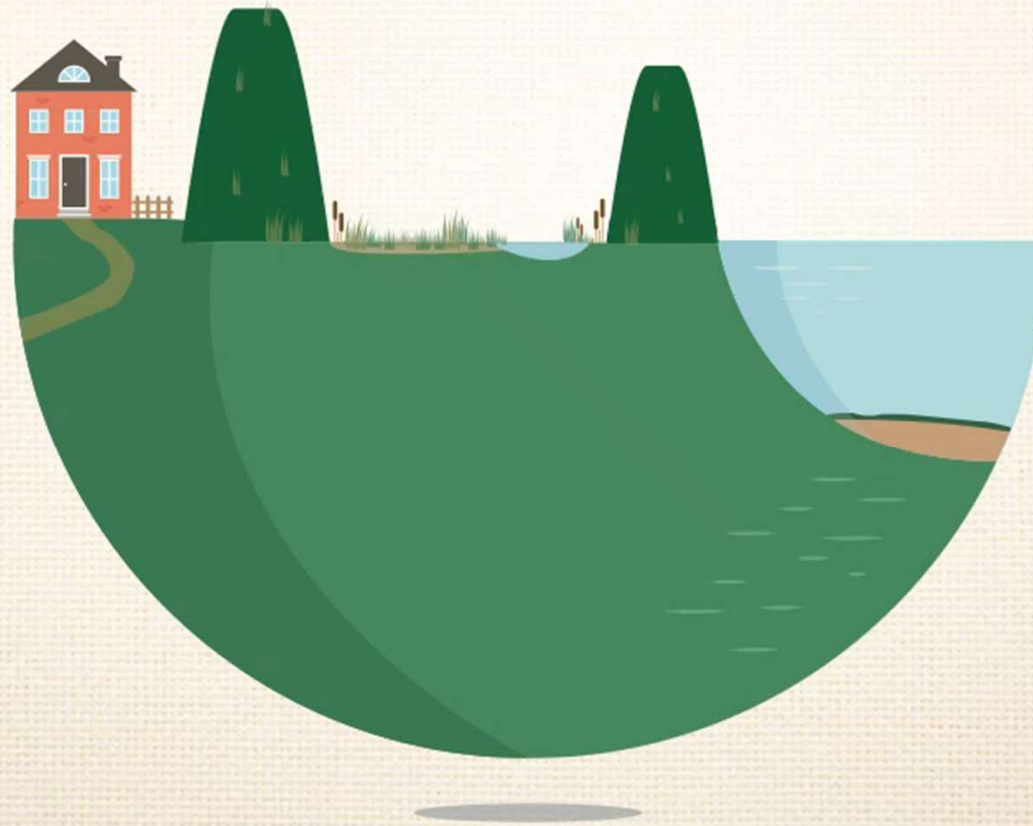


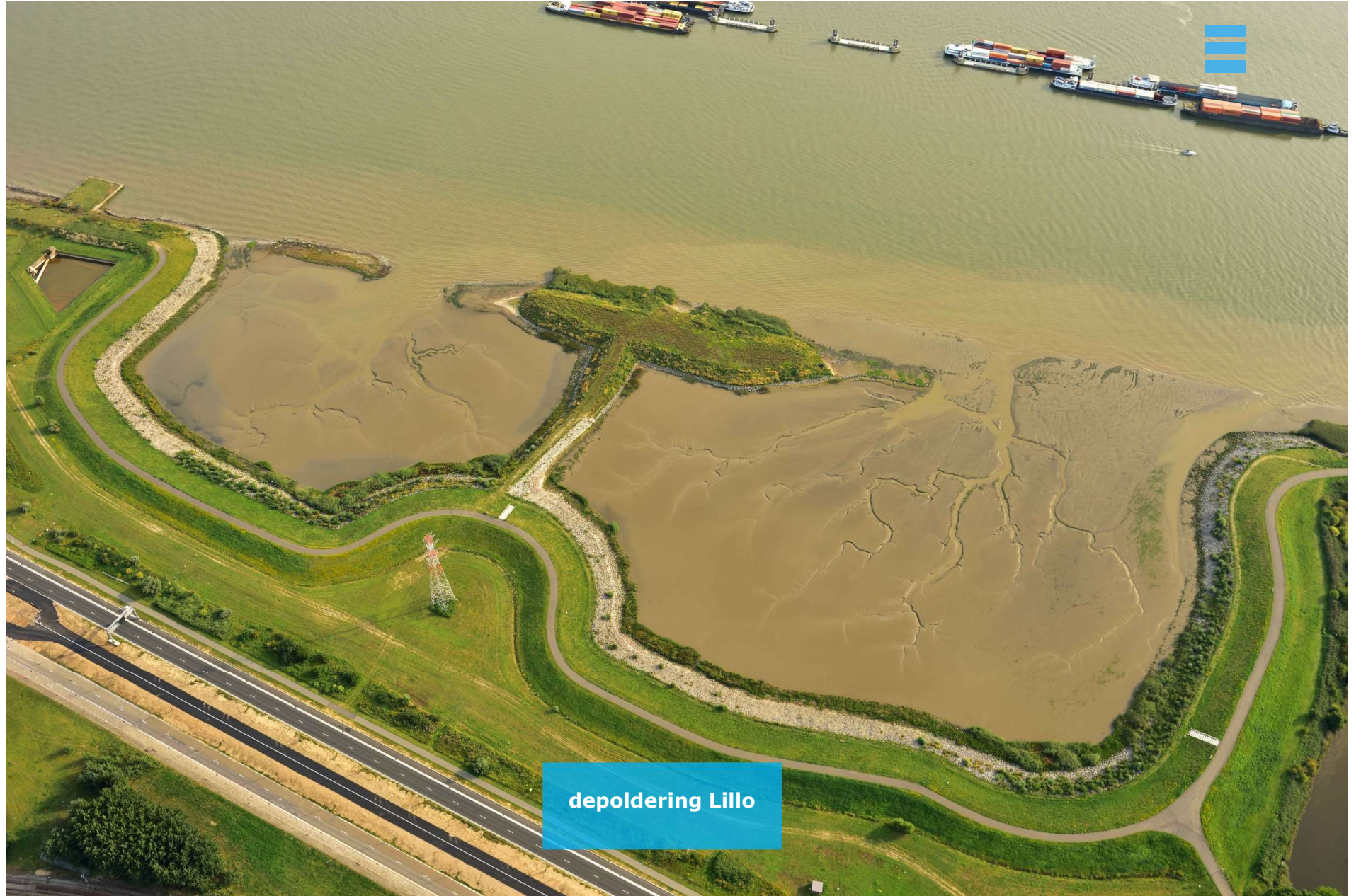
Bergenmeersen en Paardeweide

controlled inundation zones – reduced tide



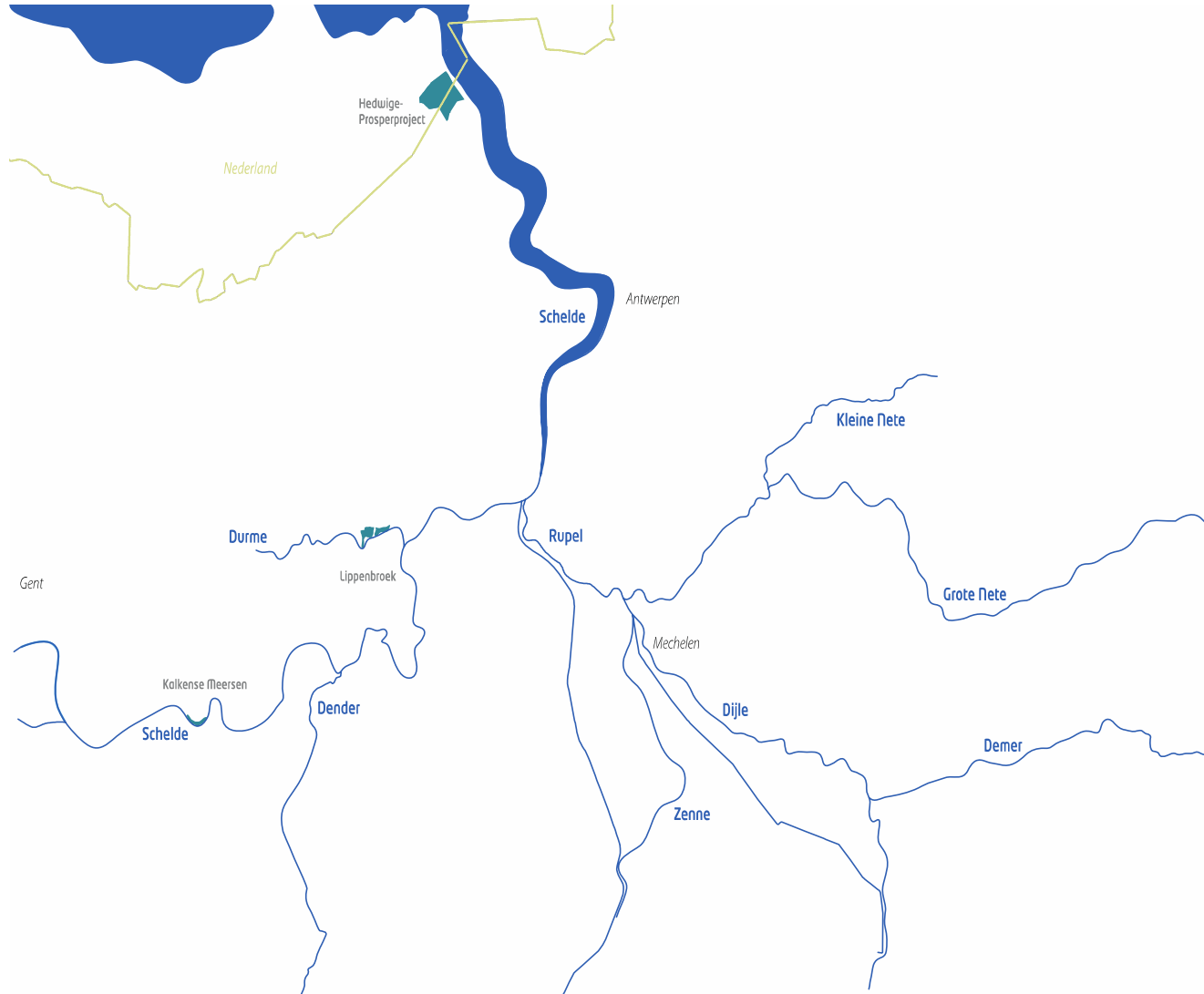
depoldering





depoldering Lillo

depoldering



Restoration of meanders

(Demer - Aarschot)

2017



2021



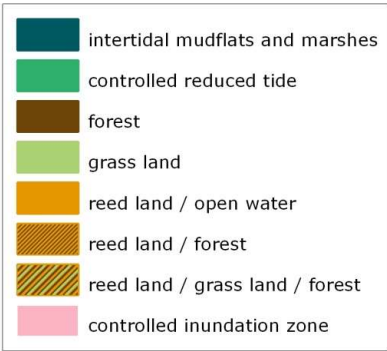


working with helpers...

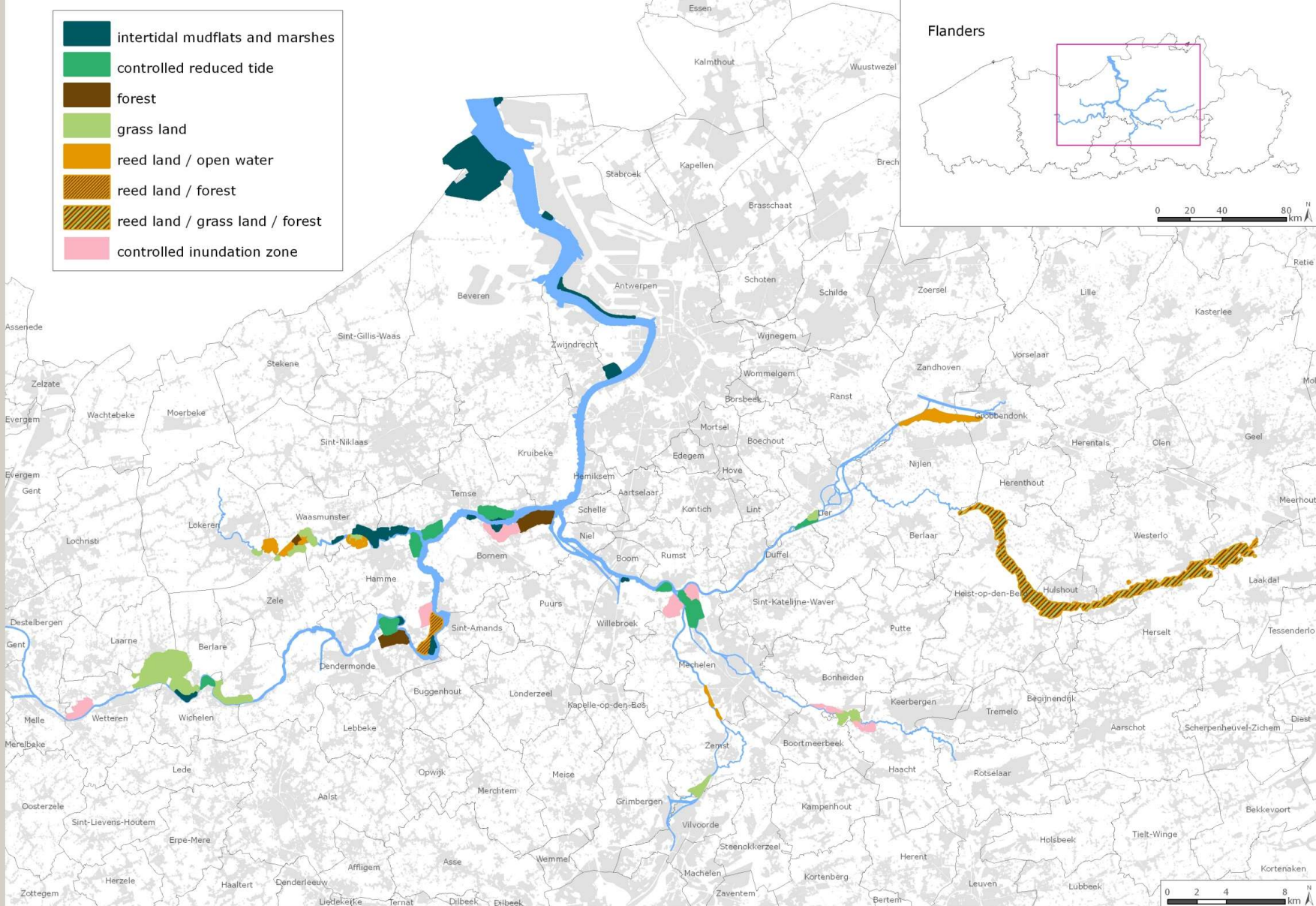
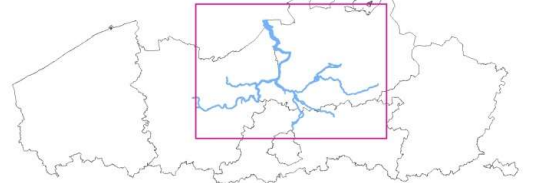








Flanders

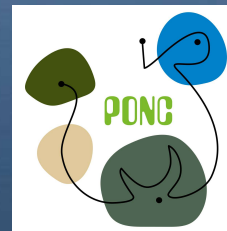


juni '23

Rewilding the river Scheldt – Sigma

 **sigmaplan**

Ruimte voor rivier en natuur



Co-funded by the
Erasmus+ Programme
of the European Union